

QUALITY

Winnebago RVs are designed and built around you, with superior craftsmanship, advanced manufacturing technologies and steel-focused construction to enhance safety and reliability.

INNOVATION

From groundbreaking RVs to game-changing features to the spacious floorplans made possible by our SmartSpace™ design, our heritage is unrivaled for continuous industry firsts in vehicle technology and design.

SERVICE

Our carefully chosen dealers are supported by factory training and our advanced parts supply system, while owners benefit from excellent real-world customer support as well as 24/7 access to online technical information.

BELONGING

Winnebago owners are a connected community – some of the friendliest, most knowledgeable and welcoming RVers you’ll find anywhere.



©2024 Winnebago



Designed for Adventure

In a world where roles can change by the hour, flexibility is paramount. And when it comes to flexibility, few vehicles can match the remarkable Winnebago® Solis®. Seating up to six, the Solis can easily function as a family car — a car equipped with kitchen, dinette and bathroom. Yet when the time comes, load up your favorite outdoor gear and head out, knowing the versatile Solis is ready for whatever adventure lies around the next bend.





No matter
where your road
leads you, at
the end of the day, simply turn
the key off and
you're home.



PRACTICAL, MEET VERSATILE

Seating up to six, the Solis easily transitions from a practical family car during the week to a comfortable, self-contained retreat once the weekend arrives.



A HOME FOR YOUR GEAR, TOO

The large gear garage (36A, 59PX) includes a durable L-track storage system that can be customized with mounts and tie-downs to secure bicycles or other gear and cargo.



BRING THE FAMILY, NOT THE TENT

Thanks to its pop-top and Murphy+ bed (or available rear sofa/bed, 59P), the Solis offers generous sleeping space for a family of campers.



WORK REMOTELY – EMPHASIS ON REMOTE

With the Murphy+ bed raised up, the movable pedestal table becomes a workstation-with-a-view for road warriors (59P, 59PX).



SLEEP CLOSER TO THE STARS

A fiberglass pop-top that comfortably sleeps two is optional on the 36B and standard (with option to remove) on the 59P and 59PX floorplans. The 36A features our Murphy+ bed as well as a multi-use dinette that converts to a sofa, daybed or single bed.



Floorplan Shown 59P



We've engineered more into your Solis, so you get the most out of every adventure

1. Versatile lounge living

Swivel cab seats, the adjustable/removable dinette table, and a multitude of storage options let you customize the Solis lounge for dining, relaxing or working from the road.

2. Quiet, efficient heating for chilly nights

The high performance, LP-powered Truma® system provides quiet comfortable heating, all controlled by the temperature set on the digital control panel.

3. Galley with indoor/outdoor functionality

With its forward-facing refrigerator, pullout counter extension, and adjustable exterior table (36A, 36B), the Solis galley is designed to allow easy access from inside or outside the coach.

4. Cross-coach Murphy+ bed

The comfortable, supportive Murphy+ bed (59"x77", 59P, 59PX or 52"x75", 36A) is set to accommodate storage for bicycles or other gear below the bed. On the 36A, removable cushions on the passenger side reveal a countertop surface that's ideal for food prep or as a stand-up workspace.

5. Pop-top sleeping for two

The easily operated pop-top offers panoramic views and provides a restful night's sleep with its innovative, comfortable 51"x75" sleep system, which conforms to your body and allows greater air flow below the mattress (NA 36A).

6. Bathroom

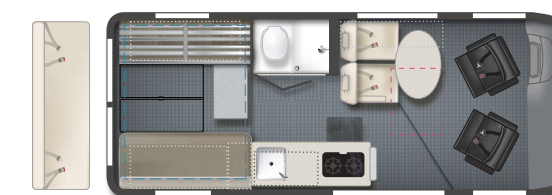
The wet bath in the 59P, 59PX and 36B makes the most of its compact space, with a cassette toilet, flexible showerhead and removable closet rod that provides extra hanging space.



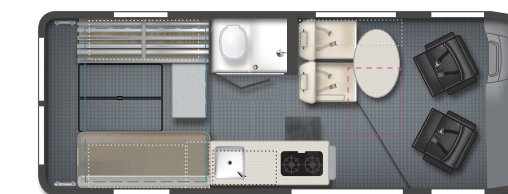
36A



36B



59P



59PX

Dotted lines denote overhead storage area. Blue dashed lines denote sleeping areas. Magenta dashed lines denote access to pop-top sleeping. Floorplans are representations only and are subject to change. Please contact a certified Winnebago dealer for more information.

Winnebago's
smart design
and advanced
technology
enhance safety
on the road, and
provide added
comfort and
convenience
in camp.



TAKE A SEAT AND TAKE COMMAND

The fuel-efficient ProMaster® chassis is easy to maneuver, with advanced safety features and an automotive driving experience that will have you feeling right at home.



3 POINT SEATBELTS FOR 4 PASSENGERS

Both dinette seats feature 3-point seatbelts, while the available sofa/bed with child seat tether anchors (59P) boosts seating capacity to six — all with 3-point seatbelts.



POWER WITH INTELLIGENCE

The Winnebago x EcoFlow® 5-in-1 Power Hub Pro (36B) streamlines power management and optimizes energy performance while also saving space and reducing weight.



EASY LIVING

The rear annex extends your living space and can easily be used as an exterior shower space, awning, or clothesline for wet suits, laundry or other items.



WINNEBAGO

SOLIS / Specifications

WEIGHTS & MEASURES	36A	36B	59P	59PX
Length	17'10"	17'10"	19'9"	21'
Exterior Height ¹	9'5"	9'5"	9'6"	9'5"
Exterior Width	6'9"	6'9"	6'9"	6'9"
Interior Height	6'3"	6'3"	6'3"	6'3"
Interior Width	6'2"	6'2"	6'2"	6'2"
Freshwater Tank Capacity ² (gal.)	20	20	20	20
Water Heater Capacity (gal.)	NA	2.6	2.6	2.6
Cassette Toilet Capacity ² (gal.)	3.2	5.5	5	5
Holding Tank Capacity - Gray ² (gal.)	20	20	20	20
LP Capacity ³ (lbs.)	20	20	25	25
Fuel Capacity (gal.)	24	24	24	24
GCWR ⁴ (lbs.)	12,000	12,000	12,000	12,000
GVWR (lbs.)	8,550	8,550	8,900	9,350
GAWR - Front (lbs.)	4,629	4,629	4,629	4,629
GAWR - Rear (lbs.)	5,291	5,291	5,291	5,291
Wheelbase	136"	136"	159"	159**
Sleeps ⁷	3	4	4	4

* Extended wheelbase

Optional Package Upgrade

Limited Edition National Park Foundation Package:
Bright White exterior with exclusive National Park Foundation badging and graphics, Canyon w/weathered teak interior, SuperSprings® SumoSprings® (front & rear), all-terrain tires, stylized performance wheels, SmartSpace™ Overland drawer system, thermal cab and window coverings, galley storage pack and removable floor mat (59P)

Chassis

Ram ProMaster® 280-hp, 3.6L V6 gas engine, 9-speed automatic transmission, 180-amp alternator
4-wheel ABS brakes
Trailer hitch⁴ 3,500-lb. drawbar/350-lb. maximum vertical tongue weight
Trailer wiring harness connector

Cab Conveniences

Radio/Rearview monitor system touchscreen, steering wheel controls, rear camera, navigation and USB ports
Cab seats adjustable headrest, slide/swivel/recline
Airbags driver and passenger
Cruise control
3-point seat belts
Electric power steering
Power mirrors w/defrost and turn signal
Power door locks w/remote
Power windows
12-volt powerpoints
Sunvisors

Fog lamps
Crosswind assist
Front and cab window privacy panels
Full-speed forward collision warning plus
Pedestrian automatic emergency braking system
Post collision braking
Push button start

Interior

LED ceiling lights
Tinted coach windows
Systems monitor panel
12V, 110V and USB charging ports
Zippered window coverings
Roof vent (Pop-top sleeping area) (36B, 59P, 59PX)
Below floor storage (lounge) (59P, 59PX)
Forward facing dinette w/3-point seat belts (59P, 59PX)
Dinette w/two facing seats (converts to sofa/daybed and includes one 3-point seatbelt) (36A)
Dinette w/two facing seats (converts to sofa/primary bed and includes two 3-point seatbelts) (36B)
Multi-use storage area w/cupholders and charging center (36A)
Removable/adjustable table w/two mounting locations (36A)
MOLLE panel retention gate w/galley storage pack (36A)
Reading lights
Deluxe powered ventilator fan (36A, 36B, 59P, 59PX without pop-top)
Roof access wiring port

Heavy-duty vinyl flooring throughout
Ladder (59P, 59PX)
Gear space w/L-track cargo tie down system (36A, 59PX)

OPTIONAL EQUIPMENT

Front cab air mattress 30" x 65" w/support base, cordless pump, repair kit and storage bag

Galley

Laminate countertop
Pull-out countertop extension (59P, 59PX)
2-burner range top w/glass cover
3.0 cu. ft. (12V) single door compressor-driven refrigerator/freezer
Stainless steel sink
Spice rack (59P, 59PX)

Bath

Flexible shower head w/dual control faucet (36B, 59P, 59PX)
Removable clothes rod (59P, 59PX)
Shower w/wall surround (36B, 59P, 59PX)
Mirror (59P, 59PX)
Shower curtain (36B, 59P, 59PX)
Tissue holder (59P, 59PX)
Swiveling cassette toilet (59P, 59PX)
Portable cassette toilet (stored under rear facing dinette seat) (36A)
Removable cassette toilet (36B)
Stainless steel round sink (36B)
Medicine cabinet w/mirror (36B)
Powered roof vent (36B)
Wardrobe cabinet (removable clothes rod, adjustable shelves and MOLLE panel w/storage pack stored on rear face of cabinet) (36B)

Bedroom

Murphy+ bed w/mattress cover, slat bed system and access to below floor storage (36A, 59P, 59PX)
Convertible dinette bed (Single - 30" x 75", Double - 53" x 75") (36B)
Movable table (59P, 59PX) (Murphy+ bed option only, NA w/National Park Foundation Package)

OPTIONAL EQUIPMENT

Sofa/Bed w/two 3-point seat belts (59P, NA w/National Park Foundation Package)

Exterior

Pop-top sleeping area w/ladder (59P, 59PX)
Assist bar handle
Porch light w/interior switch (passenger side)
Aluminum running board w/logged tread and pet loop attachment
Driver side service light w/interior switch (59P, 59PX)
Side screen door
Rear screen door
Rod and privacy screen (Provided for rear annex)
Fold-down exterior table (36A, 36B)

OPTIONAL EQUIPMENT

Remove Pop-top sleeping w/sleep system (59P, 59PX)
Pop-top sleeping w/ladder (36B)

Heating & Cooling System

Truma Combi® Eco heating system (36B, 59P, 59PX)
13,500 BTU air conditioner w/directional ducts and dial control (36A, 36B, 59PX)
Truma® VarioHeat™ (36A)

OPTIONAL EQUIPMENT

13,500 BTU air conditioner (59P)

Electrical System

2 deep-cycle Group 31 batteries (AGM maintenance free)
30-amp. power cord
2,800-watt gas generator (59PX)
220-watt flexible surface solar panel w/controller (with pop-top) (36B, 59P, 59PX)
170-watt solar panel w/controller (36A)
190-watt solar panel w/controller (36B)
170-watt solar panel w/controller (59P & 59PX without pop-top)
Auxiliary start circuit
AC/DC load center, 55-amp. converter/charger
Automatic dual-battery charge control
Coach battery disconnect system

OPTIONAL EQUIPMENT

Winnebago® x EcoFlow® Power Kit Pro (5kWh lithium battery, 5-in-1 power management controller (3,600-watt inverter, inverter-charger, DC-DC converter, MPPT solar charger and alternator charger) and touchscreen interface) (36B)

Plumbing System

On-demand water pump
Exterior wash station (behind passenger seat) (59P, 59PX)
Water center control panel includes all control valves, connection points and exterior wash station (located inside right rear door)
Eco-Hot® water system (36B, 59P, 59PX)
Fresh water sight glass
Permanent-mount LP tank w/gauge (59P, 59PX)
Removable LP cylinder (36A, 36B)
10' sewer hose
Heated drainage system

Safety

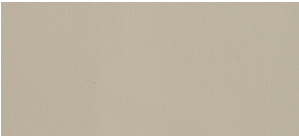
LP, smoke, and carbon monoxide detectors
Fire extinguisher
Ground fault interrupter
Child seat tether anchor (36A, 36B, 59P sofa/bed option)

Warranty⁵

12-month/24,000-mile basic warranty⁶

DECOR

NOMAD



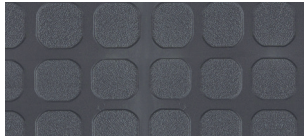
Ultrafabrics UF Select (59P, 59PX)



Luxury Linen (36A, 36B)



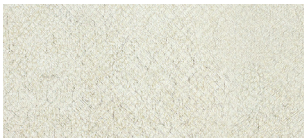
Bed Cover



Vinyl Flooring



Countertop



Wall Board



Wood - Weathered Teak

FOOTNOTES

- The height of each model is measured to the top of the tallest standard feature and is based on the curb weight of a typically equipped unit. The actual height of your vehicle may vary by several inches depending on chassis or equipment variations. Please contact your dealer for further information.
 - Capacities are based on measurements prior to tank installation. Slight capacity variations can result due to installation applications.
 - Capacities shown are tank manufacturer's listed water capacity (W.C.). Actual filled LP capacity is 80% of listing due to overfilling prevention device on tank.
 - Actual towing capacity is dependent on your particular loading and towing circumstances which includes the GVWR, GAWR, and GCWR, as well as adequate trailer brakes. Please refer to the Operator's Manual of your vehicle for further towing information.
 - See separate chassis warranty.
 - See your dealer for complete warranty information.
 - Sleeping capacity is the maximum based on a specific floorplan.
- NA Not Available

Not all items available in combination. See dealer for details.

Because features, specifications, equipment, and options may vary from those highlighted in this brochure, the buyer is responsible for confirming with the dealer the features, specifications, equipment, and options included on their specific vehicle. In addition, Winnebago's program of continuous product improvement may result in changes to vehicle specifications, equipment, model availability, and price without notice.

Winnebago recommends following the winter use guidelines and winterization procedures outlined in your owner's manual whenever camping in freezing conditions.

EXTERIORS



BRIGHT WHITE



CERAMIC GRAY



BRIGHT SILVER



SANDSTONE (59PX ONLY)

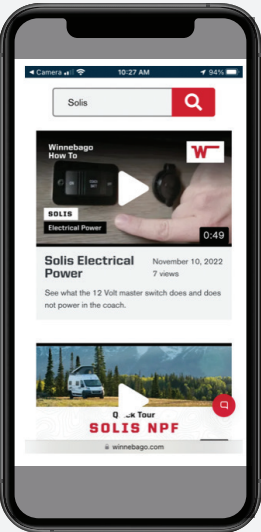


What do you need to know before you go?

And how does that cassette toilet work again?

You'll find the answers to these and many more questions in the Solis Video Library, a collection of informative and how-to videos that explains pretty much everything you need to know about the Solis.

From adjusting seats, to operating major systems, to plumbing and electrical basics — it's all here in the Solis Video Library.



Solis Video Library



Scan the QR code with your smartphone camera, to access the Video Library and learn more about the Solis.